



## WHAT ARE NEMATODES?

Nematodes are natural soil organisms that specifically target the larvae of pests such as thrips, potato beetles, whiteflies and fungus gnats in the soil. They enter the pest larvae and interrupt their development – entirely without chemicals.

In this way, they contribute to plant health in a sustainable way and protect roots and the substrate from damage caused by larvae.



## TARGET PESTS:



### THRIPS

Nematodes combat thrips larvae in the soil and interrupt their life cycle.



### POTATO BEETLES

Nematodes infest the larvae of potato beetles in the soil and prevent them from pupating.



### WHITEFLIES

Nematodes reduce the larval population of whiteflies in the soil and protect plants sustainably.



### FUNGUS GNATS

Nematodes penetrate the larvae of fungus gnats in the soil and stop their development.



## IMPORTANT INFORMATION:



### HOW LONG IS DELIVERY?

Our nematodes are delivered with a biological substrate. This protects them and allows safe transport for up to 10 days.



### DO NEMATODES SMELL OR LOOK STRANGE?

Our nematodes are delivered with a biological substrate, which may change shape during transport and increase in temperature. This can sometimes cause a musty odor, but they are completely normal and fully effective.



### HOW LONG CAN NEMATODES BE STORED?

Store in a cool and dry place after receipt – shelf life: approx. 1–2 weeks.



### HOW DO I KNOW THEY ARE WORKING?

First results are usually visible after a few weeks: fewer frass traces, healthier plants and no new larvae in the soil.



### CAN I APPLY THE NEMATODES WITH A SPRAYER?

Yes, it is best to use a fine-mesh nozzle to avoid damaging the nematodes by excessive pressure.

## FAQ



### 100% NATURAL

Chemical-free & biological



### EFFECTIVE

Targeted control in the soil



### HARMLESS

For humans, pets and beneficial insects



### SUSTAINABLE

Environmentally friendly & safe



## APPLICATION:

### MIXING:

- Add the powder to a container with some water.
- Stir well until everything is evenly distributed.
- Then dilute with the recommended amount of water.

1



### APPLY:

- Pour the solution evenly on moist soil.
- Stir regularly during application.
- Avoid direct sunlight.
- Water well after application.

2



### AFTERCARE:

- Keep the soil moist for two weeks.
- Ideal temperature: 8 °C to 28 °C.

3



**REAPPLICATION: IN CASE OF HEAVY INFESTATION, REAPPLY AFTER 2 WEEKS.**

## MIXING RATIOS:

Packaging	Area	Plants	Water
0.5 million	1 m <sup>2</sup>	5	1 l
1 million	2 m <sup>2</sup>	10	2 l
2 million	4 m <sup>2</sup>	20	2 l
3 million	6 m <sup>2</sup>	30	3 l
4 million	8 m <sup>2</sup>	40	4 l
5 million	10 m <sup>2</sup>	50	5 l
6 million	12 m <sup>2</sup>	60	6 l
10 million	20 m <sup>2</sup>	100	10 l
15 million	30 m <sup>2</sup>	150	15 l
20 million	40 m <sup>2</sup>	200	20 l
25 million	50 m <sup>2</sup>	250	25 l
50 million	100 m <sup>2</sup>	500	50 l

Tip: Effect after 1–2 weeks • Reapplication after 3–4 weeks recommended



# APPLICATION AREAS OF NEMATODES



## TARGET PESTS:



### Thrips

– Larvae and adult animals  
in the soil and on plants



### Potato beetles

– Larvae and adult beetles  
in the soil and on plants



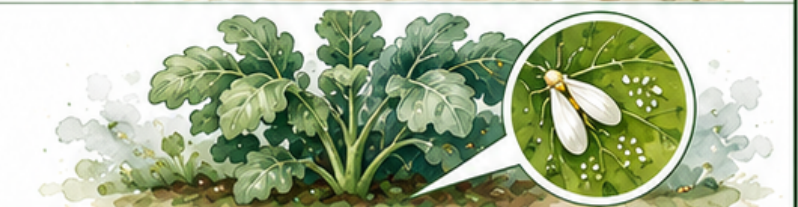
### Whiteflies

– Larvae and adult animals  
in the soil and on plants



### Cabbage flies

– Larvae in the soil  
in the root zone



## APPLICATION AREAS:



**Flower pots & houseplants:**  
Especially in case of infestation  
by thrips



**Raised beds & plant containers:**  
Ideal use against potato beetle larvae  
or soil-dwelling thrips larvae



**Vegetable beds & crop areas:**  
In case of infestation by whiteflies  
in the soil and on plants



**Under fruit trees:**  
For targeted control of potato beetle  
larvae that pupate in the soil



**Lawns & borders:**  
For control of cabbage fly larvae  
in the soil



**Greenhouses & polytunnels:**  
Protected areas where larvae  
can develop quickly



## SAFETY INSTRUCTIONS:



### NOT HARMFUL:

- **Harmless to humans, pets and the environment:** Nematodes are natural soil organisms and not harmful to humans, pets, birds or plants.



### NOT FOR CONSUMPTION:

- **Not for consumption:** This product is intended exclusively for use in gardens and plant areas. Do not eat or drink.



### AVOID CONTACT WITH EYES AND MOUTH:

- In case of accidental contact, rinse thoroughly with water.



### DO NOT INHALE:

- When preparing the spray solution, avoid creating dust.



### TEMPERATURE CONDITIONS:

- Nematodes are living organisms and should not be exposed to temperatures below 0 °C (32 °F) or above 35 °C (95 °F) if possible.  
For optimal vitality, we recommend keeping the soil sufficiently moist after application, especially at high outdoor temperatures.



### USE IMMEDIATELY AFTER MIXING:

- Do not store or reuse mixed solutions. Pour any remaining product into the bed or onto the compost.



### DO NOT COMBINE WITH CHEMICAL PLANT PROTECTION PRODUCTS:

- Avoid using products at the same time that could harm nematodes (e.g. certain fungicides, pesticides or strongly chlorinated water).



### KEEP OUT OF REACH OF CHILDREN



**NOT HAZARDOUS – NOT A BIOCIDES – NO CHEMICAL ADDITIVES**

## MANUFACTURER & CUSTOMER SERVICE:



Do you have questions about application or pest identification?



Contact us – we are happy to help!



Or visit our website for more information, products & orders: [www.greenguardia.de](http://www.greenguardia.de)



**GREEN GUARDIA – Naturally against pests**

Your experts in biological pest control

**GREEN GUARDIA**

a product of CuBeRo GmbH

